

Live United

United Way of Fort Smith Area
320 South 18th Street
PO Box 2300
Fort Smith, AR 72902-2300
Tel. 479-782-1311
Fax 479-782-3505
www.unitedwayfortsmith.org
mlittle@unitedwayfortsmith.org



United Way of Fort Smith Area

" We make a living by what we get,
but we make a life by what we give."
- Winston Churchill

Philanthropy

It is a very personal matter. Most of us would prefer our acts of generosity remain private. Yet leadership is not a private act.

It requires public affirmation in work and action of what we value. Having earned respect as a leader in our community, you are now in a unique position to broaden your influence in a very personal way.

By joining the distinguished United Way Leadership contributors, you secure your place within both United Way and our community as a guardian for the future. Your motivation inspires others to follow your lead.

Your gift will, in turn, inspire the compassion of others. You have the power to generate change, to transform the tomorrows of those in need.

On behalf of the thousands of people in need in our local communities who benefit from your Leadership gift.....THANK YOU !!!!

Leadership Giving Opportunities

Foundation Club	\$500-\$999
Pillars Club	\$1,000 - \$2,499
Cornerstone	\$2,500 - \$9,999
Alexis de Tocqueville Society	\$10,000 and above

Women's Leadership Circle

Women who contribute an annual investment of \$1,000 or more to United Way or couples who contribute an annual investment of \$1,500 or more.

Loyalty Donors

Long- time donors to United Way, regardless of the amount.

Endowment

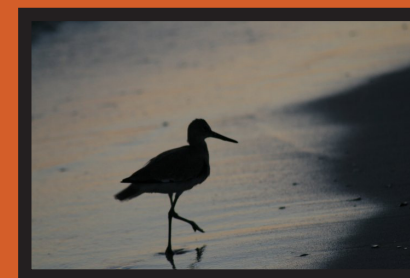
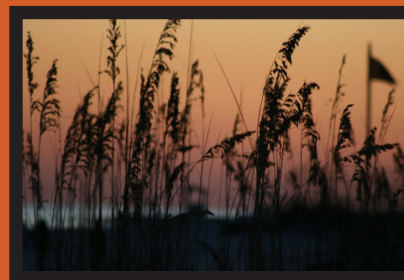
A planned gift to United Way's Endowment Fund represents a thoughtful and imaginative way to make a lasting contribution to people in need.

Donors of all levels have the opportunity to create a meaningful legacy that will assure a safe and healthy community for years to come.

The purpose of the endowment is to provide ongoing assistance to the people of the United Way service area.

The endowment was established in December 1990 by the United Way Board of Directors.

The money donated to the endowment since its inception is being invested and maintained in perpetuity. Of all things you leave behind, a gift to United Way's endowment could be the most meaningful.



Your leadership contribution will help us address key area issues in lasting ways. Giving to United Way is the most powerful way to make a difference in our community. Our focus goes beyond raising funds; we're raising hopes, creating opportunities and changing lives. United Way finds services that will help people make real and lasting changes.

Whenever a child is helped, an elderly person is served, a life rehabilitated, a person's pain alleviated, a hungry person fed or shelter provided, you are there.

You are partners in the life changing business. Only United Way brings together the people, resources and service providers needed to identify and solve community problems.

There are several options for leadership membership.
Please Join Us.